



# The Group Therapist Perspective

INTERDISCIPLINARY INSIGHTS FOR GROUP PRACTITIONERS

September 2005

## Officers

President  
Bonnie Ray Kennan, MFT

President-Elect  
Irene Harwood, Ph.D., LCSW

Past-President  
Miriam Davis, MFT

Membership Chair  
Susan Seeck, MFT

Secretary  
Terrence O'Connor, MFT

Treasurer  
Rich Hirschhoff, MFT

Parliamentarian  
Marvin Kaphan, LCSW, CGP

Newsletter Editor  
Miriam Davis, MFT

Historian  
Terrence O'Connor, MFT

Members at Large  
Dana Longino, MFT  
Nickie Godfrey, MFT

## Committees

Research, Education & Training  
William Flaxman, Ph.D., MFT

Continuing Education Series  
Lynelle Goodreau, MFT

Public Relations/Communication  
Marvin Kaphan, LCSW, CGP  
Lee Stoltzfus, Ph.D.

Training Institute  
William Flaxman, Ph.D., MFT

Web Site Liaison Chair  
Ray Bakaitis, Ph.D.

Annual Conference  
William Flaxman, Ph.D., MFT

Grant Writer  
Dana Longino, MFT

## Staff

Administrator  
Diana Castle, M.S.

Web-Site Coordinator  
Cheri Corbett  
Jennifer Horowitz (support)

## PRESIDENT'S COLUMN

Bonnie Kennan, MFT

I'm a junkie, I confess. I simply can't get enough. I'm always ready for more. More news, that is. News of what's going on, in these exciting, but disturbing and unsettling times. Therefore, I watched with great interest recently when two jurors from the Michael Jackson child molestation trial came forward to announce that they had voted to acquit when they actually believed Jackson to be guilty.



Now, don't worry! I will spare you my opinion on the subject lest you stand up and shout, "Irrelevant, counselor!" What is relevant and the idea that really caught my interest: Groups are extremely powerful. The jurors claimed that the pressure from other jury members was so unyielding they saw no choice but to cast a "not guilty" vote, even if it meant ignoring their consciences. I thought back to Henry Fonda in *Twelve Angry Men*, exerting a similar powerful influence which turned a group of twelve around. As I began to look around, I saw groups of various shapes, sizes, and shared purposes everywhere.

The power of groups can be used to positive or negative ends. We are a professional organization united around a shared interest in various types of group psychotherapy. Group therapy is a dynamic and powerful modality. Effectively executed, it can create important and meaningful therapeutic experiences and empower clients with skills for effective living. It is critical that group therapists know how to use this power.

Two years ago, GPASC created our *Mastering Group Therapy* series of six workshops held bi-monthly throughout the year. These three-hour workshops have been a successful smorgasbord of group-related topics. Lynelle Goodreau has taken over this program and has scheduled an impressive lineup for 2006, detailed later in this newsletter.

In 2004 we kicked off the *GPASC Training Institute*, under the steady hand of Dr. Bill Flaxman, with a successful training group led by Stella Resnick, Ph.D., on *Gestalt Therapy in Groups*. Dr. Flaxman will launch another training group, this time led by Elaine Rosenson, MFT, in September. Several others are in development. The Fall conference will be presented by Dr. Karen Shore in late October. Also chaired by Dr. Flaxman, this event will take place in an inviting new setting and promises to be one of our best conferences yet.

We also introduced the *GPASC Members Only Salon* series in 2005. These small informal conversation groups are the setting for a different, but no less important, aspect of our clinical preparation. This is the learning that comes from sitting with a group of colleagues and exchanging ideas and experiences.

When I joined GPASC a few years ago, I did so as a hungry clinician, eager to know more about group therapy and how it works. I jumped into the educational events that GPASC

offered. I became involved in board service because I wanted to help in the development of training and educational experiences. As a board, we continue to focus on training and education. As I serve as your president for the upcoming year, I intend to build on this foundation.

In addition, GPASC is committed to providing a variety of services that offer opportunities for collegial interaction. These include the listserv, which facilitates the immediate dissemination of information about workshops, referrals, conferences and other professional activities, the website, [www.gpasc.org](http://www.gpasc.org), the telephone tree, and the *Group Therapist Perspective*.

To harness the power of groups and use it effectively, we must understand groups more deeply. The only way to do this is to participate in them. Yes, you can read books and articles on group theory. You can think about your group and analyze what is happening there. But experience is the greatest teacher. You can gain this vital experience through participating enthusiastically in GPASC. I invite you to take advantage of our programs and offerings in the 2005-2006 year. And, when you run into me, say hi. I'll be the junkie with the newspaper in my hands.

## EDITOR'S COLUMN

**Message from the Editor**      **By: Mimi Davis, MFT**

Have you heard the song about the girl who "cain't" say no? I think I'm that girl. Despite the opportunity to be a comfortable and unlabored member of GPASC's Executive Board, I have again agreed to be our group's Newsletter Editor. But this time around, things are a bit different.

First of all, we will only be putting out an e-Newsletter or printed Newsletter a few times during the coming year. Secondly, my computer skills are undeveloped, to say the least. Therefore, I will need a fair amount of help and guidance from individuals who want information or articles sent out via our Newsletter, *The Group Therapist Perspective*. Submissions must be sent to me as an email attachment in print-ready form created in Microsoft Word or as another pdf. document. If you send me an email message that "tells me" what you want published in the text of your message, it is too difficult for me to re-write that message as a formed ad, article or piece of information. So your submission must be ready to copy into the Newsletter, and the best way to do that is as an attachment using the exact wording and format you want published. If I have a problem with that, I'll let you know.

This issue will probably go out this coming week (the week of Sept. 12<sup>th</sup>), thanks to the generous and reassuring help of Jennifer Horowitz. The next newsletter will probably go out, therefore, in early December. If you are a new member and want to have a "New Member Spotlight" written about you, please submit your information to me by mid-November. Ditto for "older" members who want to submit a "Member Spotlight" to reintroduce themselves to the membership. I'll use your submissions on a first come, first served basis. Remember that this networking opportunity reaches many more people than just the GPASC membership.

For anyone who is considering ways to help out with the disaster in Louisiana and Mississippi, The American Association of Marriage and Family Therapists (AAMFT) has communicated the following opportunity to all Marriage and Family Therapists:

**NEW RED CROSS POLICY: ALL LICENSED MFTS ARE NOW ELIGIBLE TO APPLY DIRECTLY TO RED CROSS, WITHOUT SPECIAL TRAINING, FOR DEPLOYMENT TO HURRICANE KATRINA RELIEF EFFORTS**

In order to maximize relief efforts, Red Cross has temporarily waived its usual requirement that applicants for deployment as disaster mental health volunteers must already possess training and certification from Red Cross in Disaster Mental Health Services (DMHS). For MFTs in New York, North Dakota, Delaware, Montana and West Virginia, Red Cross will accept AAMFT Clinical Membership in lieu of MFT licensure.

Red Cross application forms and instructions are available under the Hurricane Katrina link on the AAMFT home page: ([www.aamft.org](http://www.aamft.org)).

Another resource for mental health professional volunteers is a new Department of Health & Human Services website and toll-free phone number for all health professionals interested in Hurricane Katrina volunteer efforts:

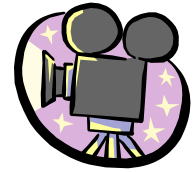
<https://volunteer.hhs.gov>

1-866-KAT MEDI

Thank you for your interest, and special thanks to our volunteers. AAMFT will keep the "Hurricane Katrina" page updated with further information. If you are volunteering and have a moment to tell AAMFT, please let them know by email or via their web site, [www.aamft.org](http://www.aamft.org).

I am hoping that all of you have a robust and healthy fall, personally and professionally.

## NEW MEMBER SPOTLIGHT



### Jo Ann Fields, MFT and Certified Integral Life Coach



Jo Ann Fields is embarking on a new phase of her career by opening her private practice in Valencia. Her office also serves Santa Clarita, Newhall, Stevenson Ranch, and the other communities of the Santa Clarita Valley and the northern San Fernando Valley. She sees families, couples, individuals, and adolescents incorporating a blending of traditional therapy, psychosocial counseling, and life skills coaching. Her expertise and passion lies in guiding her clients through difficult life transitions (i.e. divorce, death in the family, change in finances, chronic illness, etc.)

Previous to Jo Ann's new career direction, she was a counselor, advisor and instructor at College of the Canyons in Santa Clarita for seven years. She provided traditional therapy, career advisement, and case management for many diverse populations. Creating and teaching personal development classes and developing and facilitating workshops brought significant satisfaction to her. They included such subjects as parenting, body image, communication, anger management, etc.

In May, Jo Ann developed, presented and facilitated a continuing education workshop at Phillips Graduate Institute for therapists and interns. The workshop explored Therapist Burnout using guided visualization, relaxation techniques, and psychodrama. She would like to form groups focusing on difficult life issues using psychodrama, archetypes, and fairy tales.

Jo Ann attended Mt. St. Mary's College in Brentwood for her undergraduate degree majoring in Psychology, Pacifica Graduate institute in Carpinteria for her M.A. in Counseling Psychology, and New Ventures West in San Francisco for her Integral Life Coaching certificate. She accrued her 3000 MFT hours at St. Francis Counseling Center in Valencia, where she is still involved with case consultation and occasionally counsels clients on a volunteer basis.

Jo Ann and her husband John, married 18 years, live with labradoodle Persephone (queen of the underworld in Greek mythology), AKA Percie, and cats Rockie and Daisy. Jo Ann and John have seven children between them, nine grandchildren and one great-grandchild. Their family keeps them very busy with birthday parties and barbeques. The Fields hope to travel to Tuscany, Rome and Venice next spring.

Her office is located at 25050 Ave. Kearny, Ste. 101, Valencia, CA 91355

Phone- (818) 884-7354, Home & Fax- (818) 884-4751, E-mail- [jopsy@pacbell.net](mailto:jopsy@pacbell.net)

**GROUP PSYCHOTHERAPY ASSOCIATION OF SOUTHERN CALIFORNIA**

Presents.....

**MASTERING GROUP THERAPY**

**Workshops are held at:**

**The Encino Hospital at 16237 Ventura Blvd., Encino**

**The Wellness Center at 2716 Ocean Park Blvd., Suite 1040, Santa Monica**

Earn (up to) 18 CE credits. Plan now to attend this exciting series in which you will join with colleagues throughout the coming year to explore a wide range of topics related to group therapy. Six 3-hour workshops are scheduled for 2005, from 1:00 to 4:00 PM on the second Sunday of January, March, May (the third Sunday), July, September, and November.

**2 CONTINUING EDUCATION SESSIONS REMAIN IN 2005**

**MEANING AND METAPHOR**

**Group Writing Therapy : a Postmodern Lens**

**September 18, 2005**

**Encino**

Presented by Lynne Rosen, LCSW, and Eve Brandstein MA, IMF

***The Use of Interpretation in a Psychodynamic Group:***

***Video Tape of an Actual Psychotherapy Group***

**November 13, 2005**

**Santa Monica**

Presented by Marvin Kaphan, LCSW, CGP

Fees: Individual workshops (including CE certificates) cost \$25.00 for members and \$50.00 for nonmembers. **Save \$\$ by purchasing the entire series of six workshops for \$125.00 (for GPASC members) and \$250.00 (for non-members). STUDENT MEMBERS PAY 1/2 PRICE (\$62.50 for the series and \$12.50 per workshop).**

Each of these six courses is approved for 3.0 CE hours for Psychologists, MFT's and LCSWs. The Group Psychotherapy Association of Southern California (GPASC) is approved by the American Psychological Association to offer continuing education for psychologists. GPASC maintains responsibility for the program. GPASC is approved by the Board of Behavioral Sciences (#PCE 528) as a provider of Continuing Education Credits for MFTs and LCSWs. Certificates for BBS or APA EC credit will be issued upon completion of each course. **IMPORTANT NOTICE:** Those who attend the workshop & complete the evaluation will receive continuing education credits. Note that APA CE Rules require that we only give credit to those who attend the entire workshop. Those who arrive more than 15 minutes after the scheduled start time or leave before the workshop is complete will not receive CE credits.

**To reserve a seat, call Lynelle Goodreau, M.F.T.,  
at (818) 995.3547 or e-mail her at [yogaflow@msn.com](mailto:yogaflow@msn.com)  
You may also register online at [www.gpasc.org](http://www.gpasc.org)**

The **Group Psychotherapy Association of Southern California**  
Presents, as part of *The Mastering Group Therapy Series*, a 3 hour  
GPASC Continuing Education Program . . .

## **MEANING AND METAPHOR**

### **Group Writing Therapy : a Postmodern Lens**

Presented by

**Lynne V. Rosen, LCSW and Eve Brandstein, M.A.**

**Sunday, September 18, from 1:00-4:00 p.m., at the**  
Encino Hospital 16237 Ventura Blvd., Encino

This experiential workshop will help groups as well as professionals facilitate clients in meaning making through the integration of the tenets that inform postmodern therapies and the use of poetic writing for self-revelation. The written word can relieve anxiety, lighten depression, and help externalize the “unspeakable” enhancing therapeutic conversations in groups. The workshop will also demonstrate the use of structured reflection in creating rich and generative dialogue.

**Lynne V. Rosen, L.C.S.W.** is Core Faculty and Director of the Post Modern Therapy Training Program at Phillips Graduate Institute in Encino, CA. She is the co-founder of NarrativeSolutions, an organization that offers services that promote personal and organizational change.

**Eve Brandstein**, is a therapist, educator, workshop trainer and facilitator, who leads writing and performance groups.

The cost is \$25 for GPASC members and \$50 for non-members;  
1/2 price for students.

Fee includes your certificate for 3 CE Credits.

To reserve a seat, call Lynelle Goodreau M.F.T., at 818.995.3547 or e-mail her at [yogaflow@msn.com](mailto:yogaflow@msn.com)

The Group Psychotherapy Association of Southern California (GPASC) is approved by the American Psychological Association to offer continuing education for Psychologists. The Group Psychotherapy Association of Southern California maintains responsibility for the program. GPASC is approved by the Board of Behavioral Sciences (#PCE 528) as a provider of Continuing Education Credits for MFTs and LCSWs. Certificates for APA or BBS CE credit will be issued upon completion of the 3 hour program.

**The Group Psychotherapy Association of Southern California**

Presents, as part of *The Mastering Group Therapy Series*, a 3 hour

GPASC Continuing Education Program . . .

# **The Use of Interpretation in a Psychodynamic Group: Video Tape of an Actual Psychotherapy Group**

Presented by

**Marvin Kaphan, LCSW, CGP**

**Sunday, November 13, 2005, from 1:00-4:00 p.m.,**

**at the**

**THE WELLNESS CENTER**

**2716 Ocean Park Blvd., Suite 1040**

**Santa Monica, California**

GPASC receives many requests for opportunities to observe the specifics of actual Group procedures. From time to time we will present very specific workshops on the “Nuts & Bolts” of Group. This session centers on a one hour recording edited from a actual 3-hour group therapy session.

**Marvin N. Kaphan, LCSW, CGP**, a Diplomate of the American Board of Examiners in Clinical Social Work, has conducted a full-time private practice in Valley Village since 1960. For almost all that time he has maintained six on-going psychotherapy groups. He has studied at CCNY, NYU, Princeton University, Rutgers University, and Columbia University, taught at several local colleges and served as a field teacher for the University of Southern California School of Social Work.

He has done many demonstrations and lectures in Los Angeles and in other parts of the United States and Canada. On two occasions he addressed the American Psychiatric Association. His writings have been published in many journals including the American Journal of Psychiatry and the American Journal of Psychotherapy. He also holds an MFT license from the state of California, is a Certified Group Psychotherapist, a Licentiate Member of the Royal Society of Health of Great Britain, and was President of the Group Psychotherapy Association of Southern California for two successive terms. The cost is \$25 for GPASC members and \$50 for non-members; 1/2 price for students.

Fee includes your certificate for 3 CE Credits.

To reserve a seat, call Lynelle Goodreau M.F.T.,  
at 818.995.3547 or e-mail her at [yogaflow@msn.com](mailto:yogaflow@msn.com)

The Group Psychotherapy Association of Southern California (GPASC) is approved by the American Psychological Association to offer continuing education for Psychologists. The Group Psychotherapy Association of Southern California maintains responsibility for the program. GPASC is approved by the Board of Behavioral Sciences (#PCE 528) as a provider of Continuing Education Credits for MFTs and LCSWs. Certificates for APA or BBS CE credit will be issued upon completion of the 3 hour program.

# CLASSIFIED

## GPASC NEWSLETTER ADVERTISING RATES AND INFORMATION

Member rates apply to current GPASC members only.

Type of Ad	Size	Member Rate	Non-Member Rate
Full page display	7.5" x 9.5"	\$75	\$110
¾ page display	5.0" x 7.0"	\$60	\$90
½ page display	7.5" x 4.75"	\$40	\$60
¼ page display	4.75" x 4.75"	\$30	\$50
1/8 page display	4.75" x 2.25"	\$20	\$35
1/16 page display	2.5" x 2.25"	\$15	\$30
Business Card	3.5" x 2.0"	\$15	\$30
Classified Ads	30 words *	FREE	\$25

\* \$10 additional charge for any part of any additional 10 word increment

**ADS WILL NOT BE PLACED IN THE NEWSLETTER UNTIL EDITOR RECEIVED CONFIRMATION CONFIRMING PAYMENT.**

Make checks payable to GPASC and send to:

GPASC  
P. O. Box 2631  
Winnetka, CA 91396

---

### ***Parents Finding Solutions:***

Ongoing weekly groups. Informative, supportive workshops. Individualized coaching and counseling for parents. Contact Dr. Melissa Johnson, Institute for Girls' Development, 626.585.8075, ext. 108.

---

### ***Del Mar Girl Power groups:***

Ongoing weekly groups for girls 2nd grade through High School. Promote self-discovery, hardiness skills, growth-fostering relationships, and empowerment. Social skills groups also available. Contact the Institute for Girls' Development, 626.585.8075, ext. 108.

---

### ***Young Women's Program for women 18 - 30:***

Groups, individual therapy, workshops and resources empower young women through emerging adulthood and beyond. Contact Dr. Georgina Smith, Institute for Girls' Development, 626.585.8075, ext 102.

---

### ***Co-ed Psychotherapy Group now forming.***

Tuesdays, 7:00 P.M., Encino  
Facilitator Nickie Godfrey, L.M.F.T.  
For information or to arrange an initial consultation, call 818/783-5470

---

### ***Adolescent Psychotherapy Groups Now Forming***

Ongoing Interpersonal/Psychodynamic psychotherapy groups for adolescents: early adolescents (11-13 years old) and adolescents (14-17 years old). Contact Adam Fogel, LMFT at (818) 757-0404

---

### ***"Tend and Befriend"***

Ongoing psychotherapy, growth and support group for women. Please contact Mimi Davis, MFT at (818) 848-3022 for more information.

---

### ***LAW . . . ETHICS . . . aaarrrrgh***

We all know about the BBS requirement that we have 6 CEU in "law and ethics" every two years. To make this process more rewarding and personally useful, the American Mental Health Alliance (AMHA-CA) is presenting a "double session." You may sign up for either or both:

ETHICS

On Friday, September 16, 1-4 pm, Nancy Williford, LCSW,BCD, will present a 3-hour, 3 CEU session on professional ethics for mental-health practitioners. Nancy is a Certified Group Psychotherapist, and she plans to offer opportunities for us to process our own professional muddles or questions of ethics, in a safe and collegial group. Bring your worst fears or your most pressing concerns to contribute to the discussion. We plan to have fun.

Nancy is a former chair of the Arizona Board of Behavioral Health. She taught ethics courses at Arizona State University, and she wrote the core ethics course for the American Group Psychotherapy Association. She is in private practice in San Diego and La Mesa.

## LAW

On Friday, October 21, 1-4 pm, William Eddy---Attorney, Mediator, and Social Worker--- will present a 3-hour, 3 CEU session on California law as it applies to mental-health practitioners. His major focus will be on what we need to know and practice to avoid getting sued. We will also discuss the internal signs that can alert practitioners to the presence of the high-conflict personalities most likely to be difficult clients or to engage in litigation.

Bill practices divorce mediation and is the author of two books, including "High Conflict Personalities," which is available on Amazon. Bring your legal fears and dilemmas to share and discuss. Again, we plan to have fun!

## NITTY GRITTY

AMHA is a continuing education provider approved by the California Board of Behavioral Science (BBS PCE 3296). Both sessions will be held at the Scripps Well Being, on the corner of Genesee and La Jolla Village Drive in San Diego. The Well Being is upstairs in the northwest corner of University Towne Centre. Parking is convenient and free. You may enroll for either session or both. Fee for each session is \$40 (\$30 for current AMHA members).

To enroll, please send your check and psychotherapy license number, designating which session(s) you plan to attend, to:

American Mental Health Alliance  
AMHA-CA  
4545 Park Blvd #105  
San Diego 92116

Questions? (858) 492-8620  
Space is limited; please enroll promptly.

---

### ***Group Psychotherapy for Men and Women***

Timeframe: Open ended

Depth psychotherapy group focusing on life issues: achieving goals, creating happiness and self-esteem, developing healthy relationships, intimacy, assertiveness, setting boundaries, job and career concerns. All members have had, or are having individual therapy with another therapist or with Dr. Stoltzfus. Facilitated with a blend of humanistic, psychodynamic and behavioral approaches.

**When:** Monday or Thursday, 7:30 to 9:00p.m.

**Contact Name:** D. Lee Stoltzfus, Ph.D.

**License Number:** Psy 8607, MFT 6746

**Location:** (City only): La Canada

**Phone number:** 818-952-1599

**E-mail:** [dr.lee.phd@doctor.com](mailto:dr.lee.phd@doctor.com)

## Members Only Salon

- **Evelyn Pechter and Mimi Davis** will be hosting a MEMBERS ONLY SALON from 11 am to 12:30 pm on SUNDAY, SEPTEMBER 25th at Mimi's Beverly Hills office. The topic is "Balancing Our Practices and Our Lives". We hope to explore aspects of balancing individual and group work in our practices, and balancing personal and professional demands in our lives. Bagels and beverages will be available.

This group will be limited to 10 people. Please RSVP to Mimi at [miriamdavis@verizon.net](mailto:miriamdavis@verizon.net). We will forward the address and other details closer to the date.

- When was the last time you immersed yourself in a good novel? Plan now to attend our Members Only Salon on December 4, 2005. We will enjoy holiday treats and discuss *The Schopenhauer Cure*, Irv Yalom's delightful new novel about group therapy. Start now and read 4-5 pages a day. Mark your calendar today. Watch the listserv for details or contact Bonnie Kennan, who will host the event. (310) 265-6644 or [Marabon@cox.net](mailto:Marabon@cox.net).

## A NOTE ABOUT THE LISTSERV

If any of you are not taking advantage of the membership benefit of the listserv, I would urge you to reconsider. It is an extremely valuable source of news, information, referrals and discussion. As long as you're a member of GPASC, you're eligible to join the listserv. To sign on to the listserv, you need only send an email to: [gpasc-subscribe@topica.com](mailto:gpasc-subscribe@topica.com). To post something to the list, simply write an E-mail to: [<gpasc@topica.com>](mailto:gpasc@topica.com)

One caveat about its use. Remember that everything you write to the listserv goes to every list member. Also, if you receive a message through the listserv and hit your reply button, the response goes to the entire list, even if you intend it to be a personal response to one person. Forgetting this, tends to clog up everyone's mailboxes with junk mail that doesn't apply to them. This leads to frustration and resignations from the list.

**If you have any trouble using the list, please write to me at: [<mnk22@columbia.edu>](mailto:mnk22@columbia.edu).**

Marvin Kaphan

## New Members Join GPASC

We wish to congratulate the following new GPASC members, voted upon and approved by the Board of Directors:

M. Holly O'Meara - Affiliate Membership (student)  
Nadia Mishael, Psy.D., LCSW - Full Membership  
Adam Fogel, LMFT - Full Membership  
Ronit Davidyan, LCSW - Full member.

We welcome you to GPASC and look forward to meeting you at our upcoming meetings and events. You are also invited to submit a "New Member Mini-Spotlight" for publication in an upcoming edition of the *Group Therapist Perspective*. If interested, please send your paragraph by email to Newsletter Editor, Mimi Davis, MFT at [miriamdavis@verizon.net](mailto:miriamdavis@verizon.net) or by "snail mail" to GPASC at P.O.Box 2631, Winnetka, CA 91396.

Thank you,  
Susan Seeck, MSW, Membership Chair

Group Psychotherapy Association of Southern California  
*52nd ANNUAL CONFERENCE*

**CONTRASTING STYLES OF GROUP PSYCHOTHERAPY 5:  
FURTHER EXPLORATIONS**

**“Working with Dreams in Group Therapy: Two Safe and Ethical Models  
that Facilitate Deep Personal and Interpersonal Processing”**

**A Training Conference Providing Effective Dynamic Skills Transferable to Your Practice**

**Distinguished Presenter: Karen Shore, Ph.D., C.G.P.**

Clinical Psychologist, Psychoanalyst, Certified Group Psychotherapist, Couples Therapist  
President-elect: Los Angeles County Psychological Association

Dream work brings us deeply in touch with our inner self and our emotional world. When a group works together with a dream, the myriad of associations creates a deep and powerful experience for everyone in the room. This training is designed to benefit any therapist who is interested in dreams and wishes to use dreams as a tool to deepen self-and-other awareness. It will help therapists, as group leaders, to guide their groups' members to use dreams to increase insight, and deepen empathy and bonding, within the group.

In the morning session, Dr. Shore will present two models of working with dreams in group therapy. One model uses the concept of the “Group Dream”, a dream with several people in it which can be related to the therapy group and its members. Some Group Dreams have great power in that they can be used over time as a metaphor for the group, its members, and how the group is working. Dr. Shore will also discuss the “Group Experiential” model, in which all members of the group take on one person’s dream as their own. Dr. Shore will use case material to demonstrate how these two models can be utilized in group work.

The afternoon will be devoted to the experiential portion of the conference. Attendees are encouraged to bring in a recent dream. One dream will be chosen and a method will be taught that will guide each attendee who wishes to participate with that dream in a unique way. The group provides support as well as many more ideas, associations, and feelings about a dream than any one person alone, or any two people working together, can do. The person whose dream is chosen will benefit from the work of many, and it is truly surprising how much other attendees gain from working creatively with someone else’s dream. The experiential structure used by Dr. Shore, based on the work of Montague Ullman, maximizes safety and discovery. To ensure safety, attendees can choose to participate or observe. Disclosure of personal information is strictly voluntary. Attendees will be asked to abide by the same rules of confidentiality expected from a therapy group. Dr. Shore makes sure that no one coerces others, or makes interpretations about others, or probes into anyone else’s psyche.

**Sunday, October 30, 2005 - 9 AM to 5 PM**

**The Topanga Community House**

1440 N. Topanga Canyon Blvd.

Topanga, CA 90290

7 CE Credits for Psychologists, MFTs, and LCSWs. GPASC is approved by the American Psychological Association to offer continuing education credits for psychologists. GPASC maintains responsibility for the program. GPASC is approved by the Board of Behavioral Sciences (#PCE 528) as a provider of Continuing Education credits for MFTs and LCSWs.

See [www.gpasc.org](http://www.gpasc.org) for a brochure detailing conference information and for on-line registration, or call  
**(323) 960-5143**

# The Group Psychotherapy Association of Southern California

*Presents . . . an Exceptional Training Opportunity:*

## **GPASC Training Institute in Voice Dialogue Group Therapy (36 CE credits)**

The GPASC Training Institute is making available to a maximum of 12 therapists (including both licensed practitioners and unlicensed graduate students) an exceptional opportunity to enroll in a six-month training program in Voice Dialogue Group Therapy, a unique experiential process that effectively facilitates the integration of split off, disowned, or polarized aspects of the self. Energies and sub-personalities dance through people; learn the art of capturing these selves and giving them voice in order to guide a person to knowing their true essence. While compatible with many theoretical orientations, Voice Dialogue is, in itself, a powerful process that facilitates awareness of conscious and unconscious parts of self. Clinicians will learn how, why, and when to dialogue with the many aspects of self to facilitate lasting change. This technique allows the clinician to work empathically with client defenses and gain access to core material.

Once this training group is formed by mid-September 2005, it will remain intact, meeting bi-weekly on Fridays (September 23, 2005 through February 17, 2006) in Encino or Calabasas, from 10 AM to 1 PM, for 12 three-hour sessions (36 hours) of didactic and experiential training with Elaine Rosenson, M.A., M.F.T. Elaine has trained extensively with Drs. Hal and Sidra Stone, the originators of this internationally acclaimed work. Elaine has assisted Hal and Sidra in their trainings and is endorsed by them to provide continuing education to therapists in Voice Dialogue Therapy. Elaine has facilitated Voice-Dialogue group therapy and the training of therapists in this profoundly deep work for 15 years, helping many therapists weave Voice Dialogue Therapy into their different orientations, from psychoanalytic work to Gestalt, Cognitive-Behavioral, and somatic therapy. This group will be a safe place to enrich your professional skills and do deep personal work.

---

This course is approved for 36.0 CE hours for Psychologists, MFTs, and LCSWs. The Group Psychotherapy Association of Southern California (GPASC) is approved by the American Psychological Association to offer continuing education for psychologists. GPASC maintains responsibility for the program. GPASC is approved by the Board of Behavioral Sciences (PCE 528) as a provider of Continuing Education Credits for MFTs and LCSWs. Certificates for BBS or APA CE credit will be issued upon completion of the 36-hour training course.

**Important Notice:** those who attend the workshop and complete the evaluation will receive continuing education credits. Note that APA CE Rules require that we give credit only to those who attend the entire workshop. Those who arrive more than 15 minutes after scheduled start times or leave before the workshop is complete will not receive CE credits.

**FEES** for this training have been set modestly but sufficient so as to cover presenter stipend, printing and advertising expenses, etc. Cost for the 36 CE-credit training is \$780 (\$22 per CE-hour) for non-GPASC members; \$650 for GPASC members (\$18+ per CE-hour); and \$540 for graduate students (\$15 per unit).

To reserve a seat (limited to 12), or for additional information regarding the GPASC Training Institute, contact William Flaxman, Ph.D., MFT, at (310) 452-6693, or [williamflaxmanphd@mac.com](mailto:williamflaxmanphd@mac.com), or Elaine Rosenson, MA, MFT, at (818) 501-3118, or you may register on-line at **[www.gpasc.org](http://www.gpasc.org)**

**REGISTRATION:** Complete this form (keeping a photocopy for yourself) and mail it, along with your check, to:  
GPASC, P.O.BOX 2631, Winnetka, CA 91396

Name \_\_\_\_\_ Degree \_\_\_\_\_ License # \_\_\_\_\_

Grad. School \_\_\_\_\_ Expected Graduation Date \_\_\_\_\_

Address \_\_\_\_\_ City \_\_\_\_\_ State \_\_\_\_\_ Zip \_\_\_\_\_

Phone \_\_\_\_\_ Fax \_\_\_\_\_ E-mail \_\_\_\_\_

Please charge \$ \_\_\_\_\_ to my credit card (your phone number, above, is required for a credit card transaction):

Card Type \_\_\_\_\_ Card # \_\_\_\_\_ Card Expiration \_\_\_\_\_

The Group Psychotherapy Association of Southern California is dedicated to increasing public awareness of group psychotherapy as a healing modality, providing scientific information and continuing education to clinicians, and promoting an interdisciplinary forum to facilitate informal and professional collegial dialogue among its members.
--